



Norway

Helgeland

Birger Vennesland



skog+
landskap

NORWEGIAN FOREST AND
LANDSCAPE INSTITUTE

Where is Helgeland?



skog+
landskap

NORWEGIAN FOREST AND
LANDSCAPE INSTITUTE





skog+
landskap

NORWEGIAN FOREST AND
LANDSCAPE INSTITUTE



skog+
landskap

NORWEGIAN FOREST AND
LANDSCAPE INSTITUTE



skog+
landskap

NORWEGIAN FOREST AND
LANDSCAPE INSTITUTE





skog+
landskap

NORWEGIAN FOREST AND
LANDSCAPE INSTITUTE





skog+
landskap

NORWEGIAN FOREST AND
LANDSCAPE INSTITUTE





skog+
landskap

NORWEGIAN FOREST AND
LANDSCAPE INSTITUTE

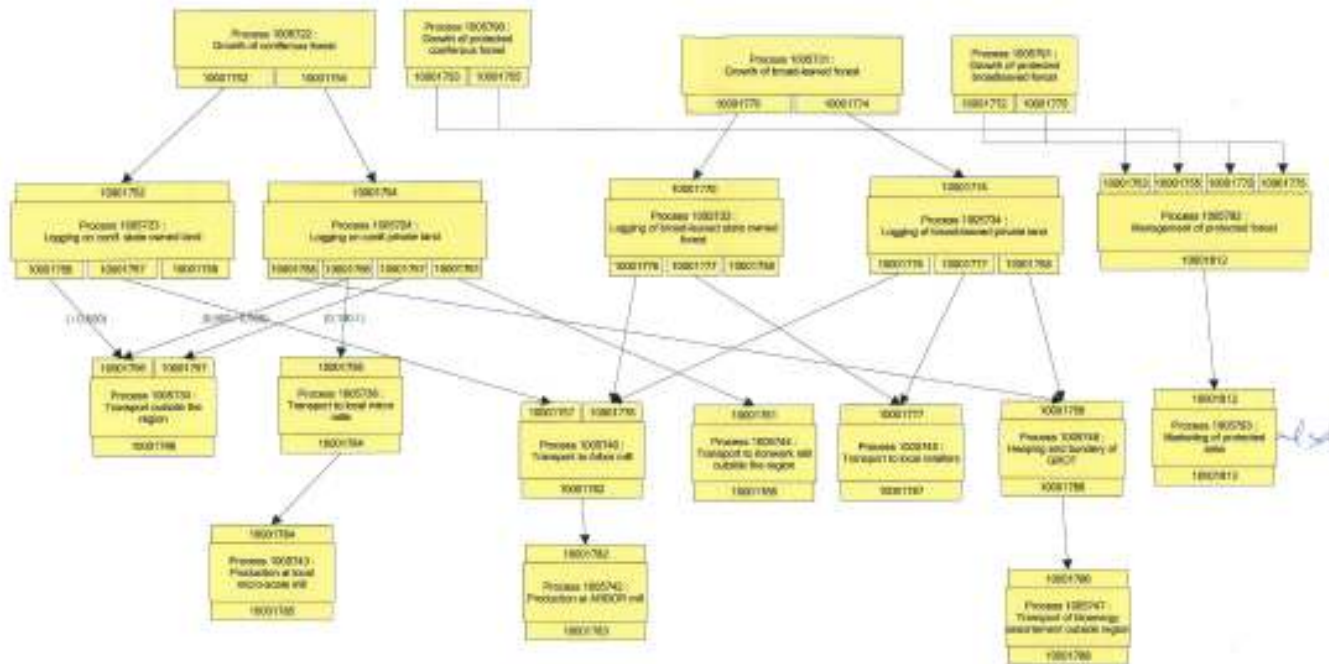


Flow Chart



skog+
landskap

NORWEGIAN FOREST AND
LANDSCAPE INSTITUTE



Indicators



skog+
landskap

NORWEGIAN FOREST AND
LANDSCAPE INSTITUTE

- > Environmental indicators
 - > Forest Biodiversity, GHG emission and Carbon stock, Energy use, Forest resources

- > Social indicators
 - > Employment, Marketing and PR (advertising), Occupational health and safety, Education and training

- > Economic indicators
 - > Revenue, Production cost, Transport and **Recreational use**

Recreational use

- > Frequency of visits
 - > Hiking tracks, number of visitors, stay over's
- > Value added local sales
 - > Hiking, hunting, skiing, water sports, fishing visitor centre, accommodation,
 - > (Taxi, PR, Travel agencies, Food serving)



skog+
landskap

NORWEGIAN FOREST AND
LANDSCAPE INSTITUTE

Questions

- > How will the timber-industry be influenced by the close down of one big sawmill?
- > How would the timber-industry be influenced by an increase in the protection of forested land?
- > How would the tourism-industry be influenced by an increase in the protection of forested land?



skog+
landskap

NORWEGIAN FOREST AND
LANDSCAPE INSTITUTE

Hypothesis

- > If we increase the protected areas by 20%, the total value added would increase because of the increase in tourism activities within the region.



skog+
landskap

NORWEGIAN FOREST AND
LANDSCAPE INSTITUTE



Photo: Oskar Puschmann,
Skog og landskap



skog+
landskap