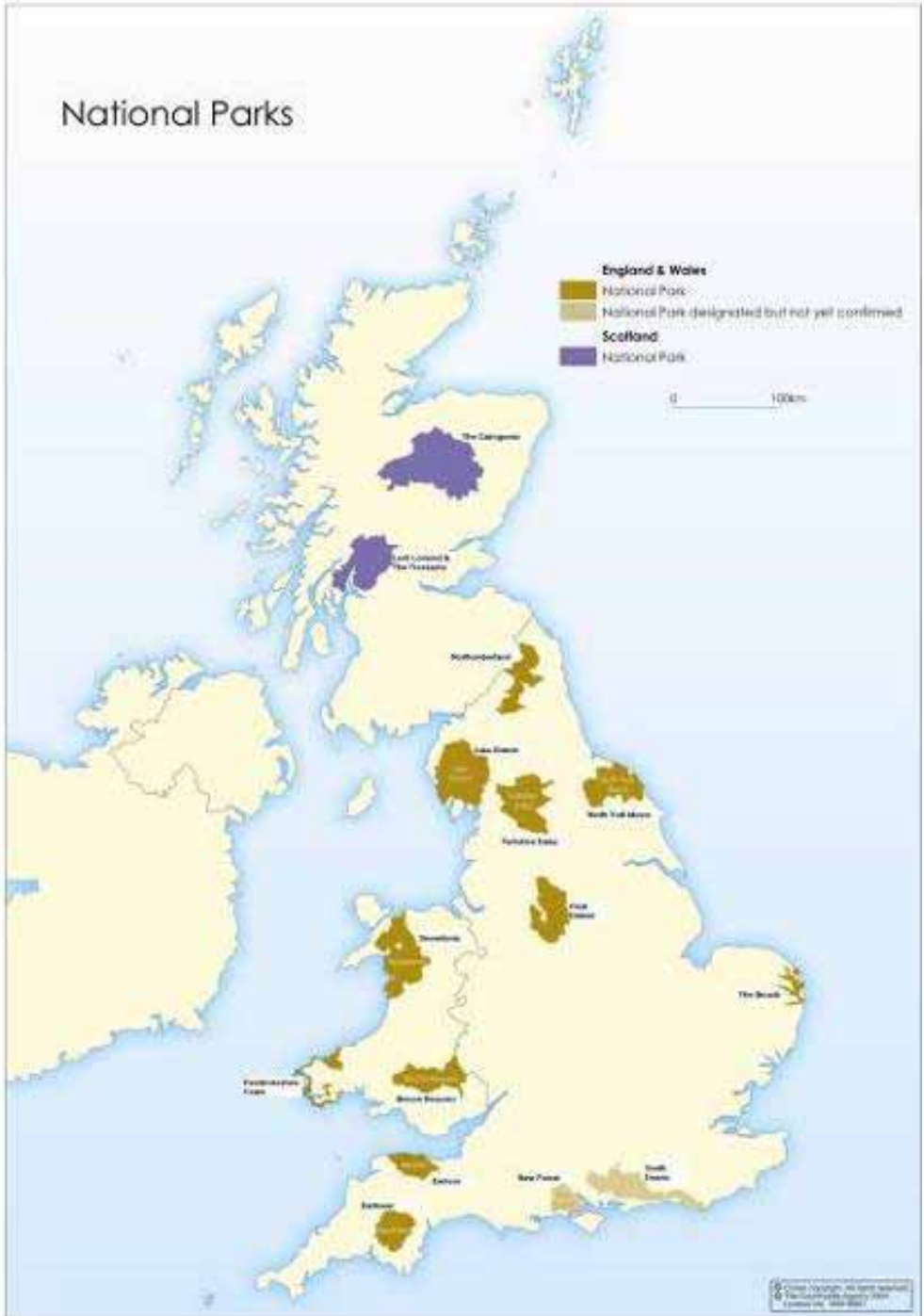
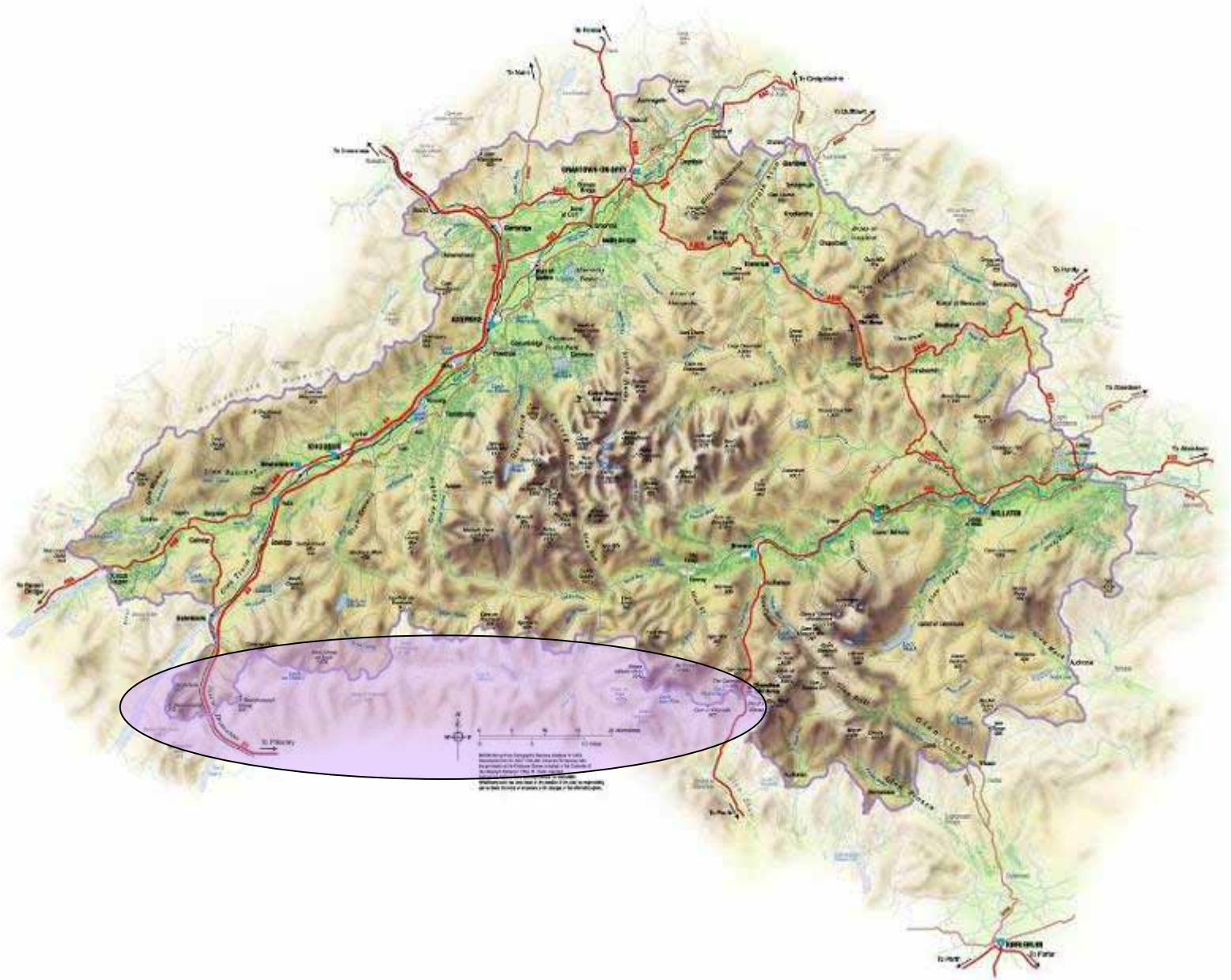




**Cairngorms**  
NATIONAL PARK

# National Parks























# Aims of the National Park

- To conserve and enhance the natural and cultural heritage of the area
- To promote sustainable use of the natural resources of the area
- To promote understanding and enjoyment of the special qualities of the area to the public
- To promote sustainable economic and social development of the area's communities



**Cairngorms**  
NATIONAL PARK



Cairngorms National Park Plan 2007

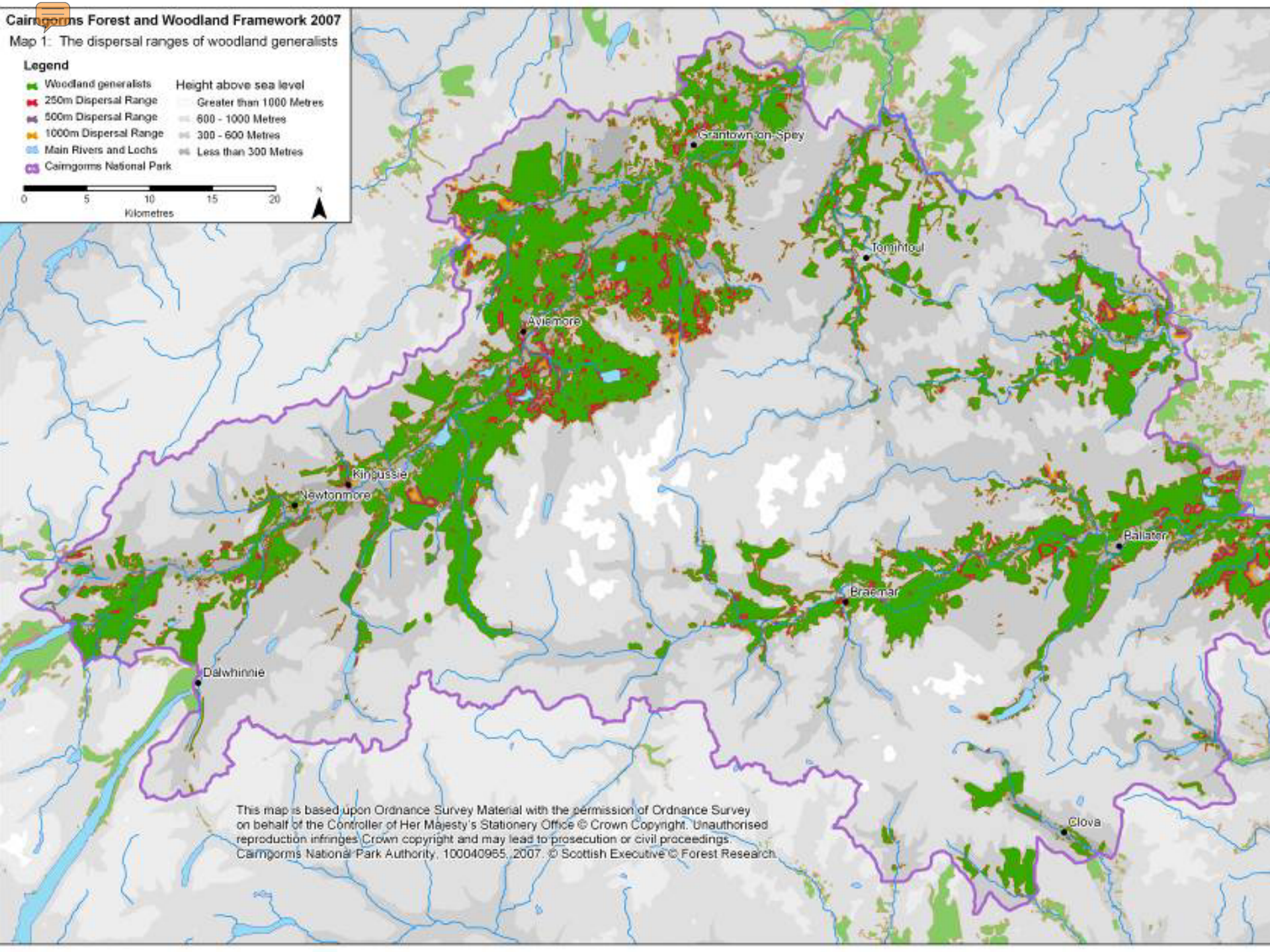
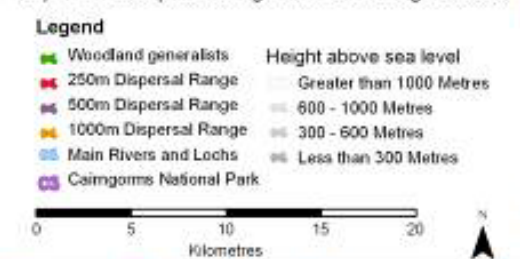


- Scottish Forestry Strategy
- Regional Forestry Strategies
- Climate Change Act 2009
- Land Use Strategy



# The area of woodland in the Cairngorms in 1988 (Hall, 2006)

<b>Woodland type</b>	<b>Area (ha)</b>	<b>% National Park Area</b>
Semi-natural	36,274	10
Mixed: semi-natural/planted	4,651	1
Planted	34,219	9
<b>All woodland</b>	<b>75,202</b>	<b>20</b>



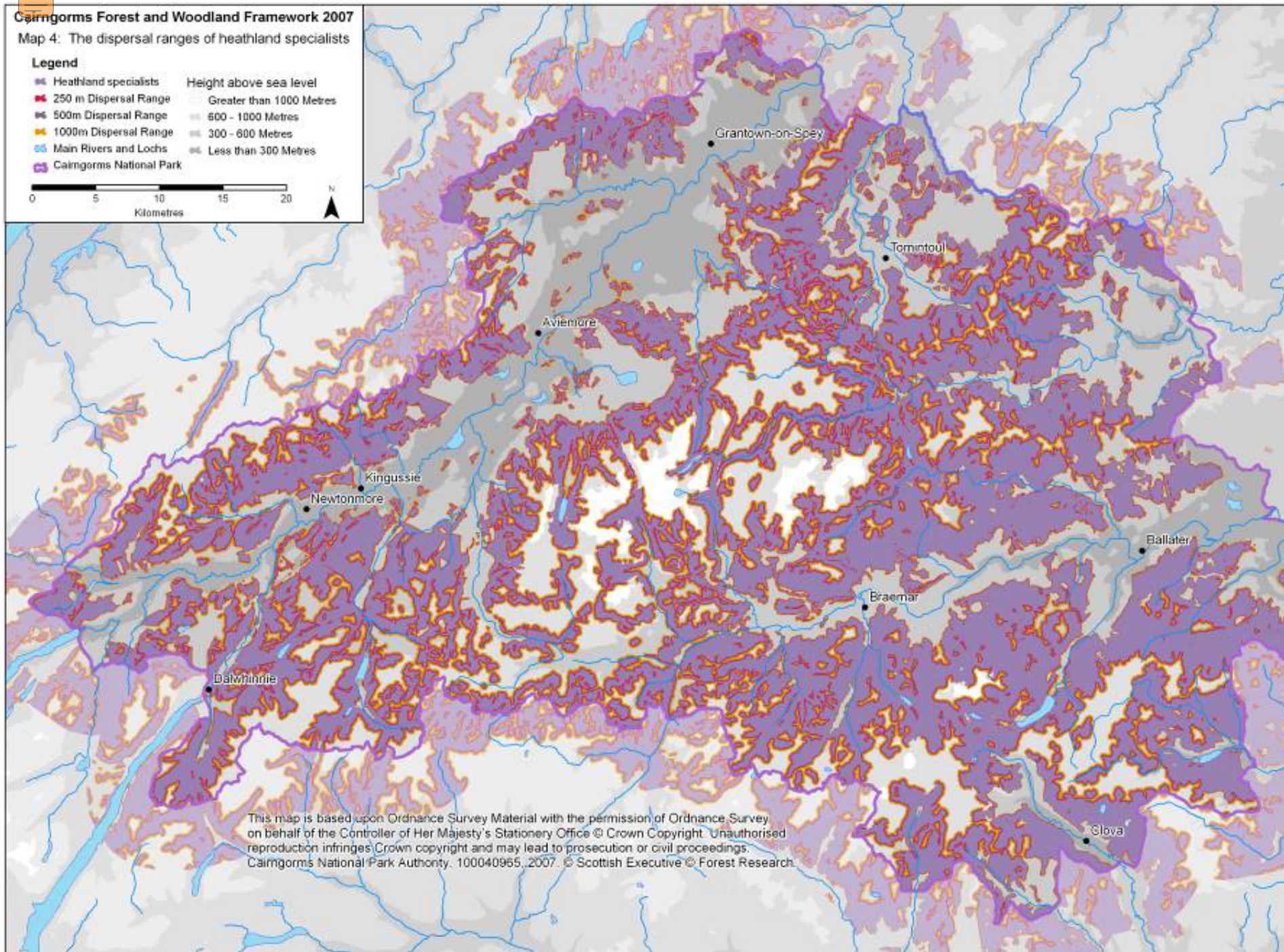
This map is based upon Ordnance Survey Material with the permission of Ordnance Survey on behalf of the Controller of Her Majesty's Stationery Office © Crown Copyright. Unauthorised reproduction infringes Crown copyright and may lead to prosecution or civil proceedings. Cairngorms National Park Authority, 100040955, 2007. © Scottish Executive © Forest Research

# Cairngorms Forest and Woodland Framework 2007

## Map 4: The dispersal ranges of heathland specialists

### Legend

- |  |  |
|--|--|
|  Heathland specialists    |  Height above sea level   |
|  250m Dispersal Range     |  Greater than 1000 Metres |
|  500m Dispersal Range     |  600 - 1000 Metres        |
|  1000m Dispersal Range    |  300 - 600 Metres         |
|  Main Rivers and Lochs    |  Less than 300 Metres     |
|  Cairngorms National Park |  |



This map is based upon Ordnance Survey Material with the permission of Ordnance Survey on behalf of the Controller of Her Majesty's Stationery Office © Crown Copyright. Unauthorised reproduction infringes Crown copyright and may lead to prosecution or civil proceedings. Cairngorms National Park Authority, 100040965, 2007. © Scottish Executive © Forest Research.













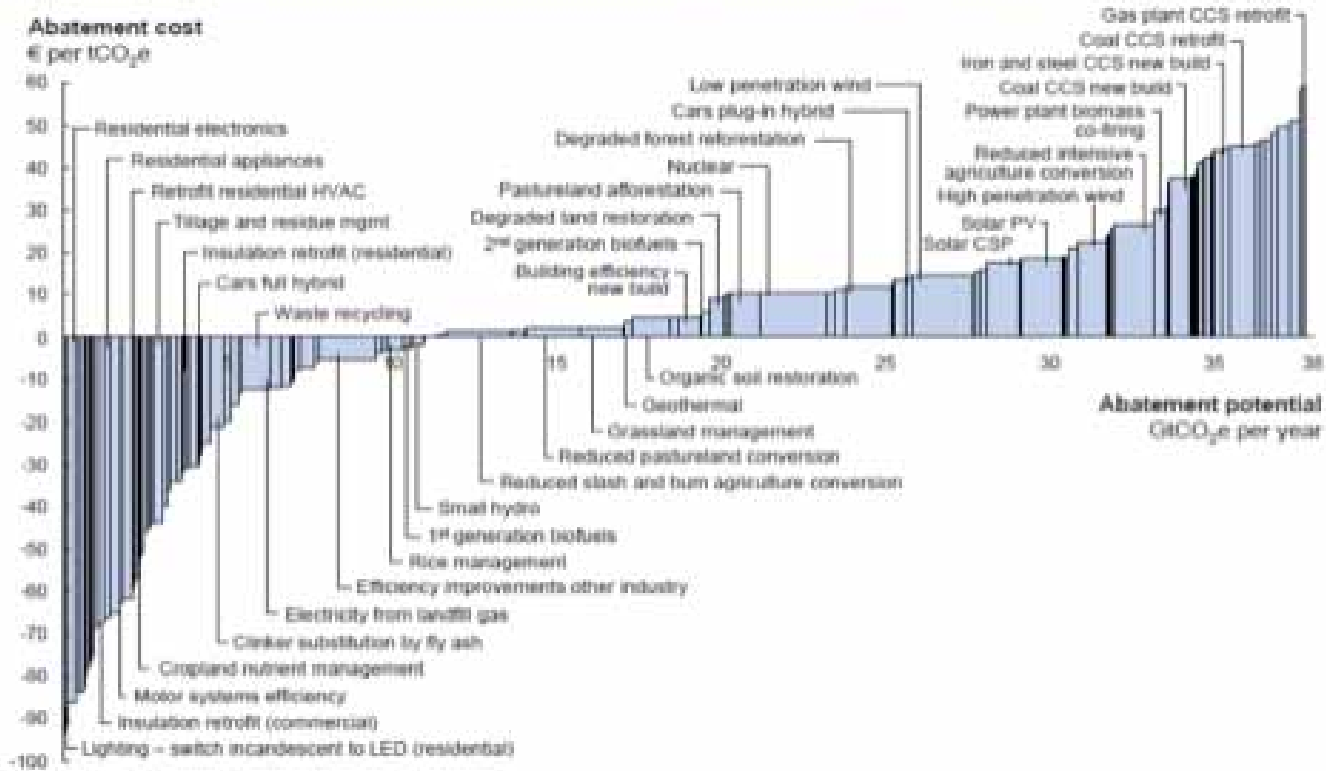




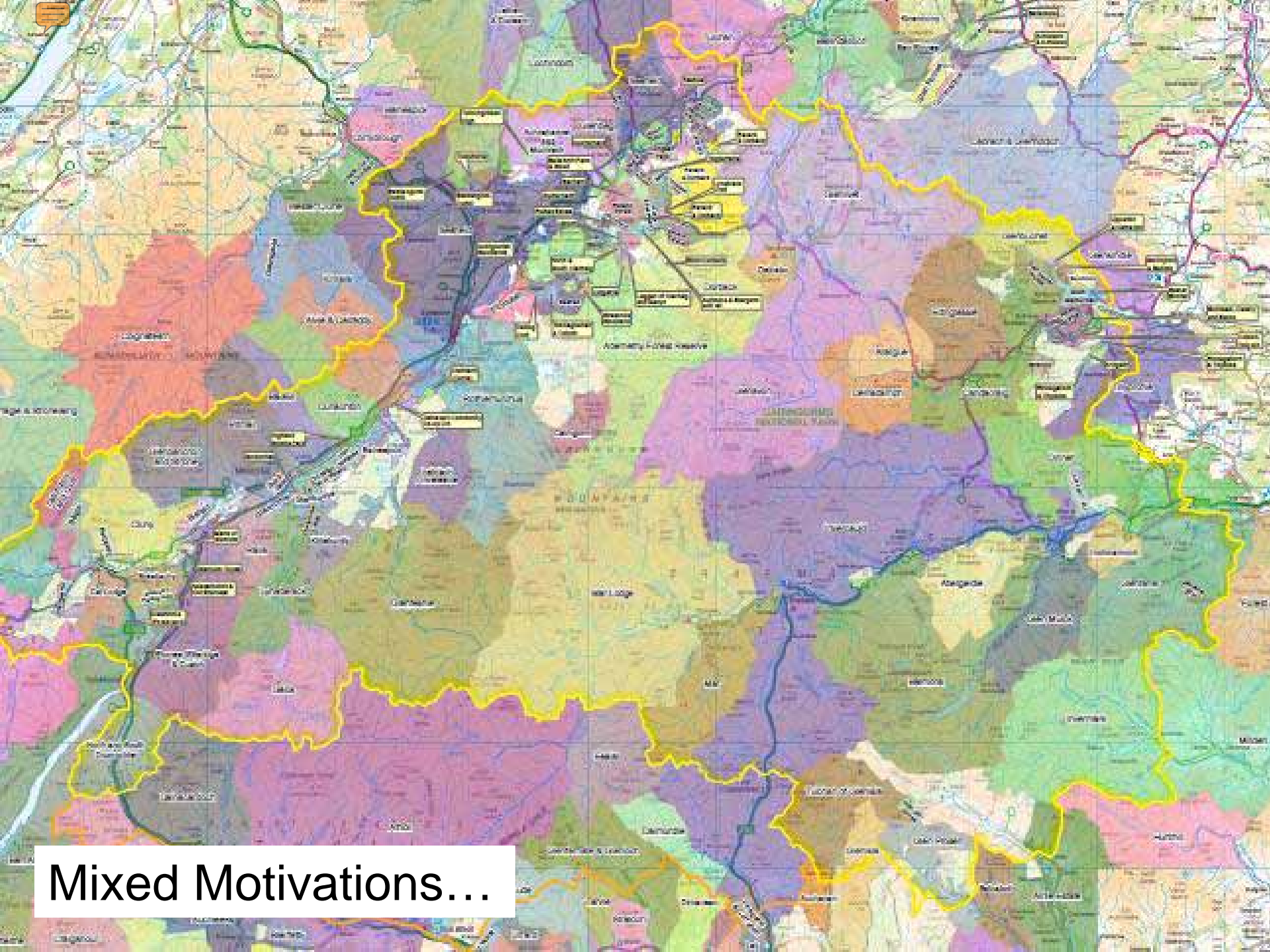
# McKinsey & Co global MACCs

Exhibit 1

## Global GHG abatement cost curve beyond business-as-usual – 2030



Note: The curve presents an estimate of the maximum potential of all technical GHG abatement measures below €60 per tCO<sub>2e</sub> if each lever was pursued aggressively. It is not a forecast of what role different abatement measures and technologies will play.  
Source: Global GHG Abatement Cost Curve v2.0



Mixed Motivations...



Which way to turn –  
can Nortosia help?

- Inform policy choices
- Assess impacts on sustainability





**Cairngorms**  
NATIONAL PARK

[hamishtrench@cairngorms.co.uk](mailto:hamishtrench@cairngorms.co.uk)

[www.cairngorms.co.uk](http://www.cairngorms.co.uk)