



skog+
landskap

NORWEGIAN FOREST AND
LANDSCAPE INSTITUTE

Protect or Produce

Forest Management Scenarios in Indre Helgeland - Norway

Rovaniemi August 19. 2011

Birger Vennesland and Mette Myhre - Norwegian Forest and Landscape Institute

ToSia!

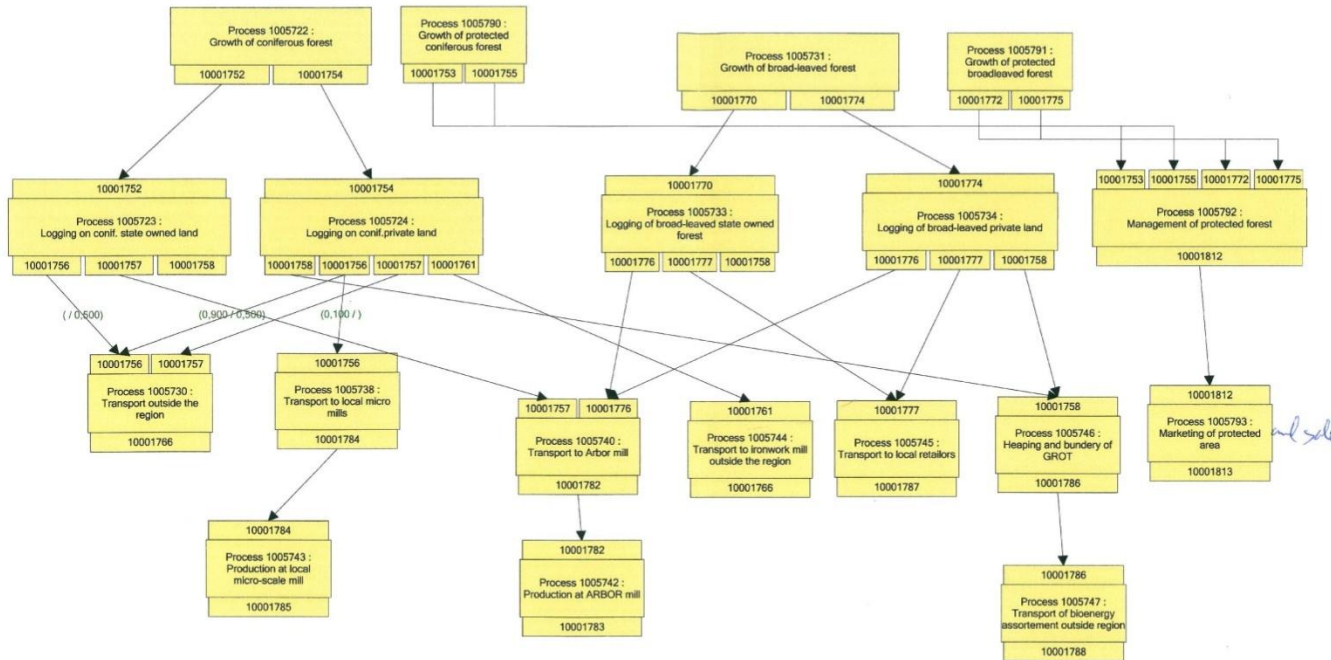
- > Answers the question of: What if?
- > What if
 - > Introduction of new production line?
 - >
 - > Increased protection of forest land?

Flow Chart



skog+
landskap

NORWEGIAN FOREST AND
LANDSCAPE INSTITUTE





skog+
landskap

NORWEGIAN FOREST AND
LANDSCAPE INSTITUTE

> What if:

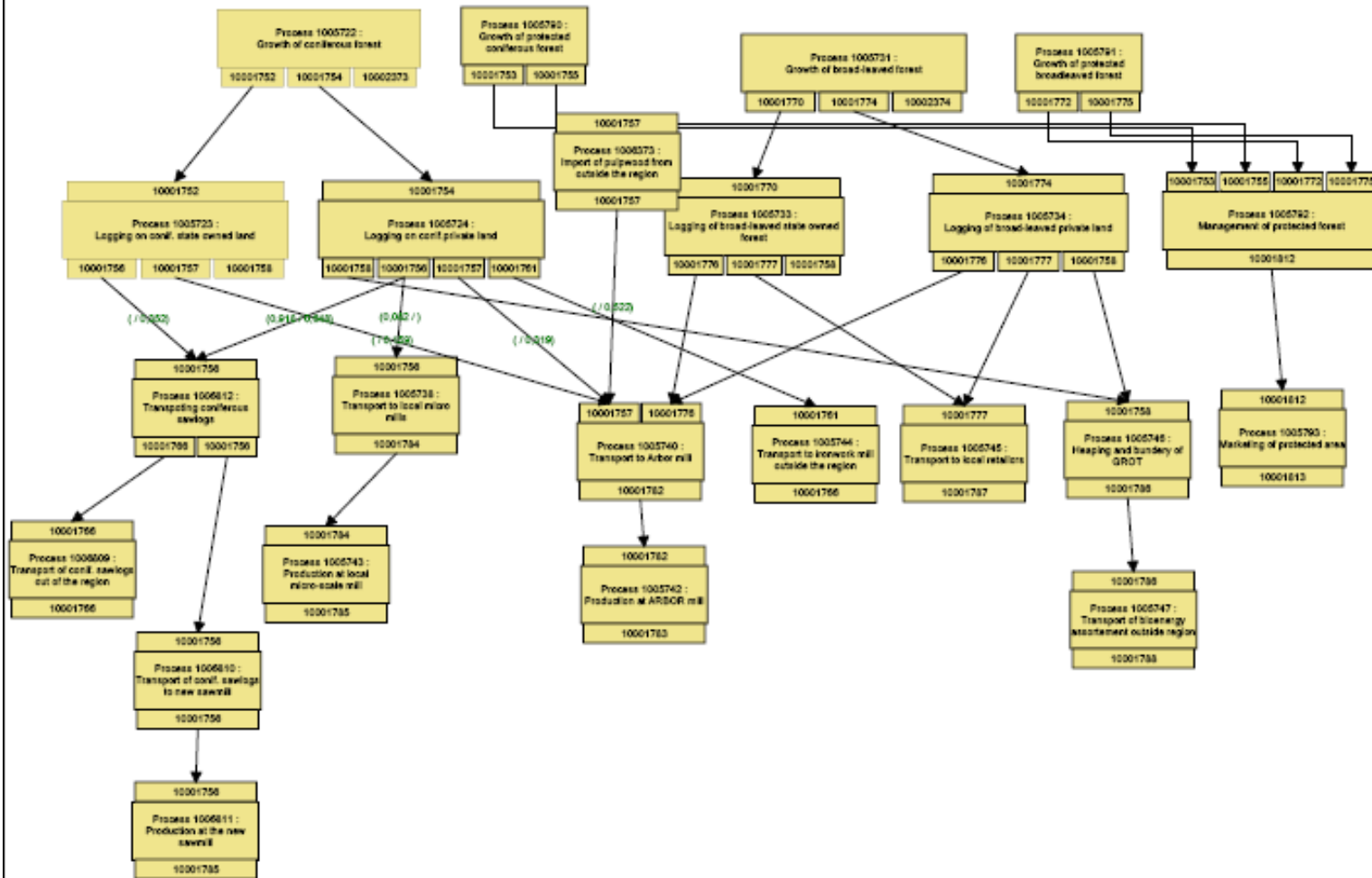
New production

New Sawmill.



skog+
landskap

NORWEGIAN FOREST AND
LANDSCAPE INSTITUTE

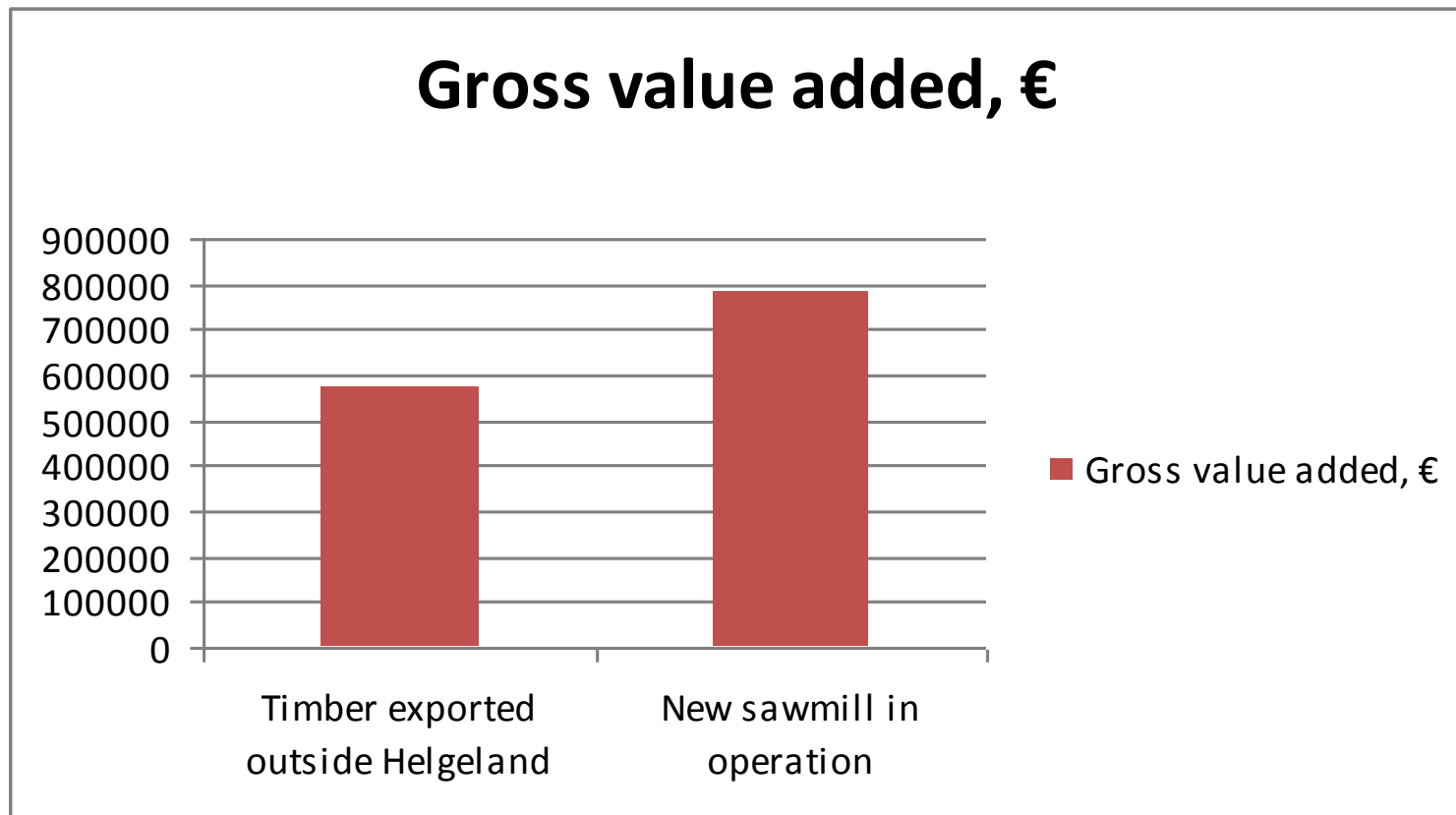




skog+
landskap

NORWEGIAN FOREST AND
LANDSCAPE INSTITUTE

Comparison of the two scenarios

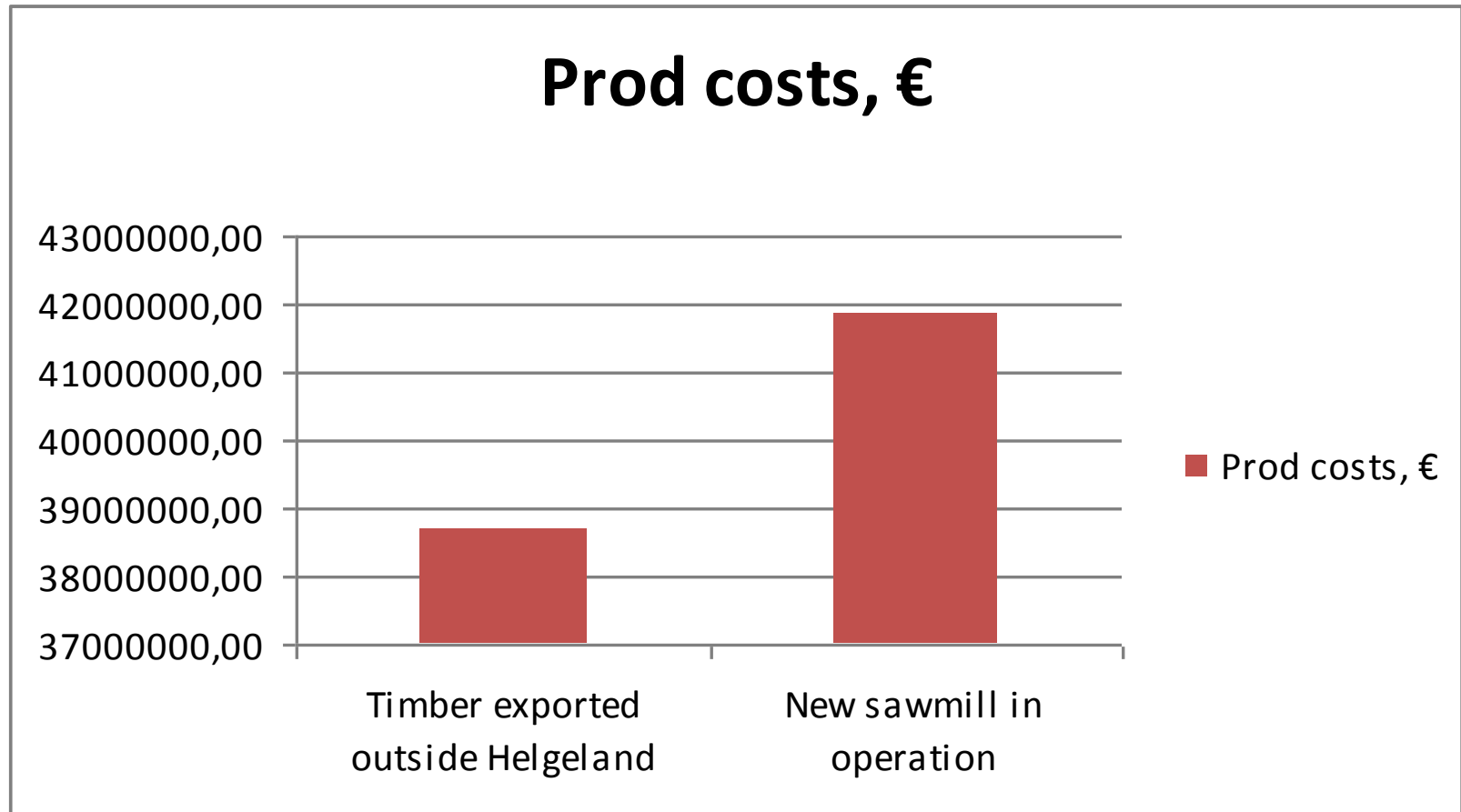




skog+
landskap

NORWEGIAN FOREST AND
LANDSCAPE INSTITUTE

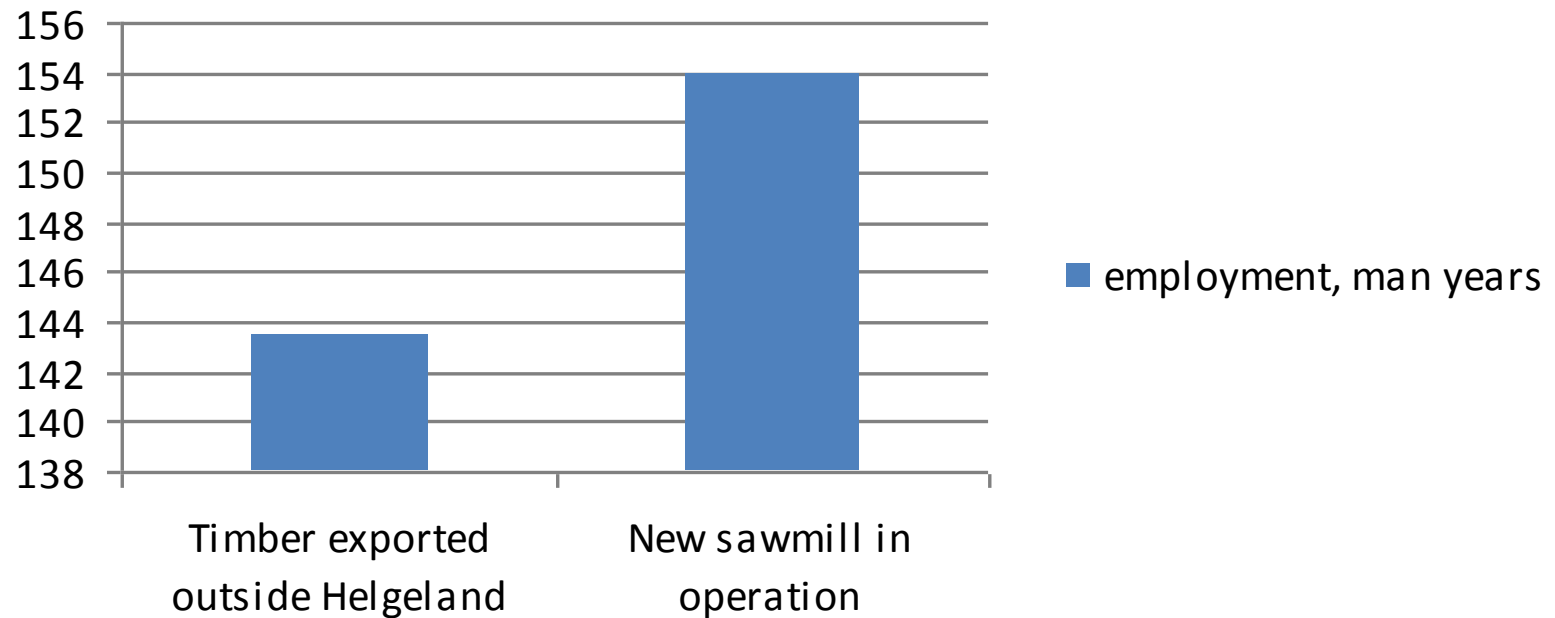
Comparison of the two scenarios





Comparison of the two scenarios !

employment, man years



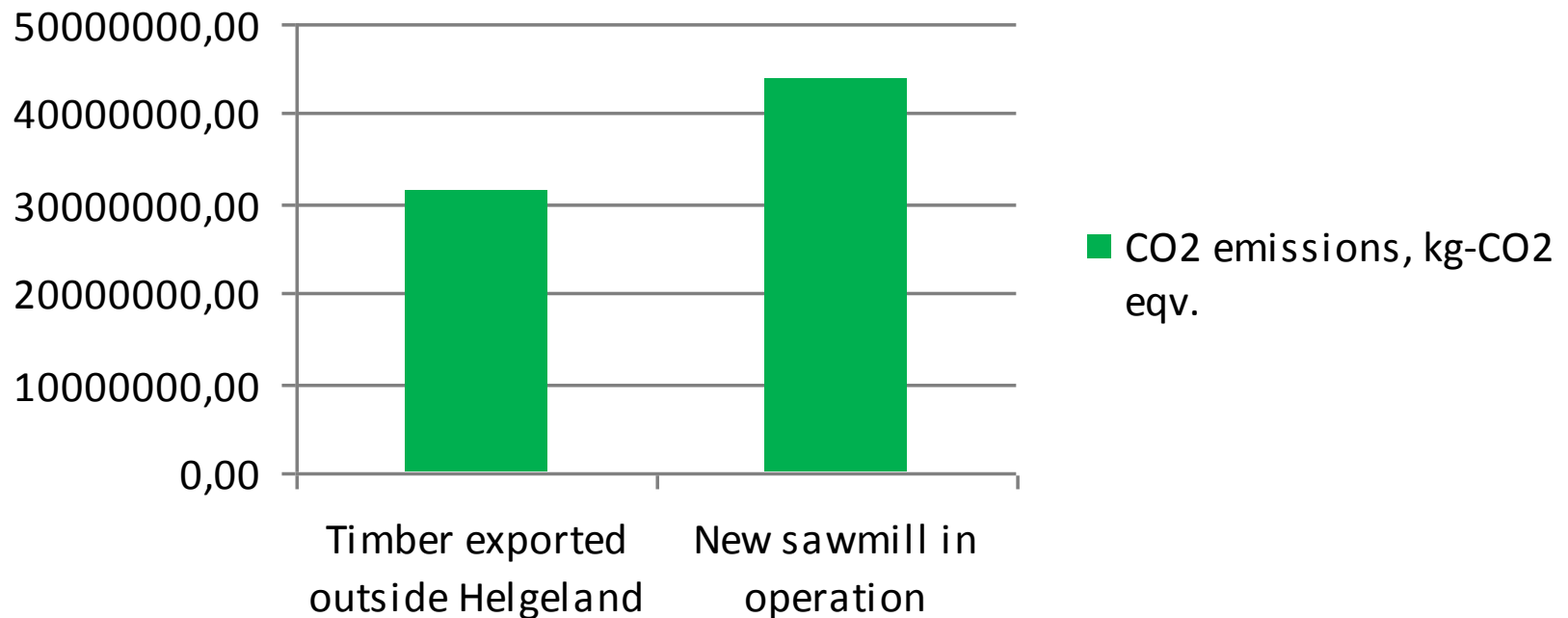


skog+
landskap

NORWEGIAN FOREST AND
LANDSCAPE INSTITUTE

Comparison of the two scenarios

CO2 emissions, kg-CO2 eqv.



Until now!

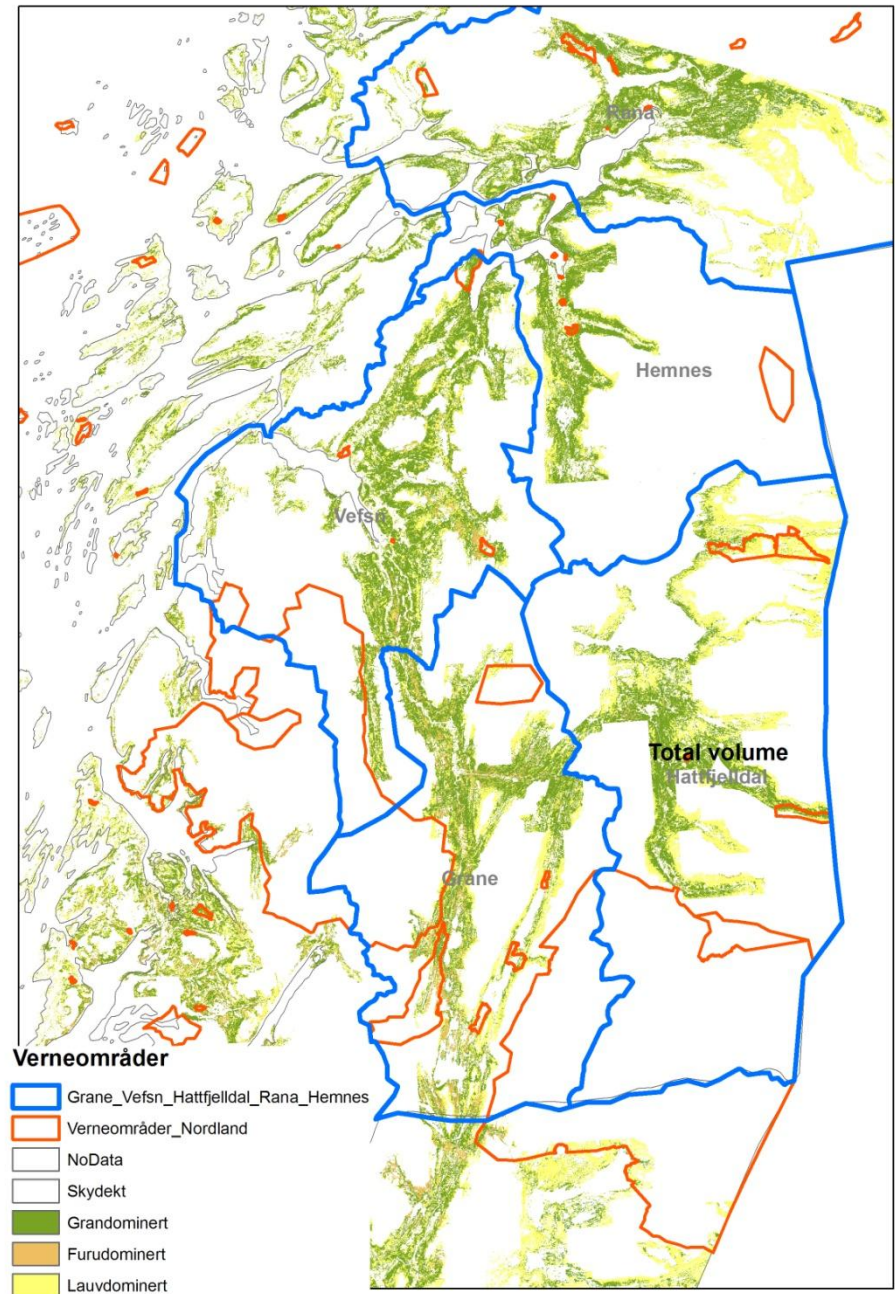
- > Only looking at
 - > export vs local value added



skog+
landskap

NORWEGIAN FOREST AND
LANDSCAPE INSTITUTE

- > However, what if competition about resources?
- > Increased protection of forest land
 - > This is where the master Thesis of Mette Myhre has been focused!





skog+
landskap

NORWEGIAN FOREST AND
LANDSCAPE INSTITUTE

Protect or Produce ?

- > Do we see the potential for increased Value Added if increased Protection?
- > Her kommer Mette INN!!!

Master Thesis – Small Scale Tourism in Helgeland.

- > Mette Myhre
- > Master in Nature Based Tourism
- > Norwegian University of Life Sciences – Ås, Norway



skog+
landskap

NORWEGIAN FOREST AND
LANDSCAPE INSTITUTE

Research questions:

- > 1. How has the development of protected areas in Helgeland affected the tourism industry in the inner part of Helgeland?

- > 2. How can the operators within agritourism in the inner part of Helgeland develop their own business as an attraction affiliated with Innovation Norway's principles for sustainable tourism, especially connected to economic viability?



skog+
landskap

NORWEGIAN FOREST AND
LANDSCAPE INSTITUTE

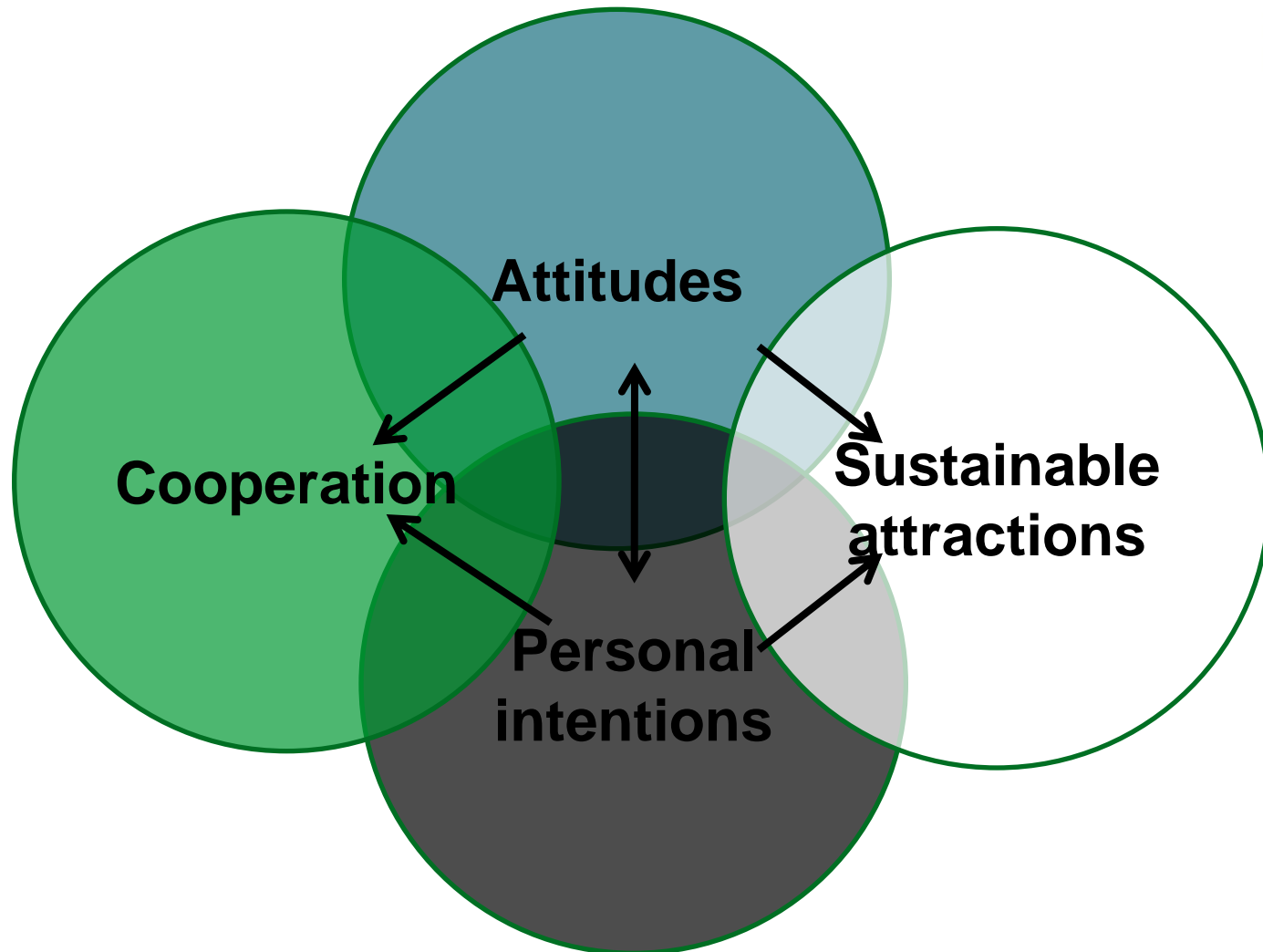
- > Theory
 - > Sustainable development
 - > Sustainable tourism
 - > Attractions
 - > Attraction development
 - > The Paradox of Tourism
- > Method
 - > Qualitative methodology
- > Results



skog+
landskap

NORWEGIAN FOREST AND
LANDSCAPE INSTITUTE

The overall model



> Conclusion

- > The development of protected areas in Helgeland has little or no effect on the operators within agritourism in the inner part of Helgeland.
- > To be able to exploit the potential for development in the area there is a need for better cooperation! Both between the different operators and between the operators and the public authorities.



skog+
landskap

NORWEGIAN FOREST AND
LANDSCAPE INSTITUTE

- > How to make use of ToSIA!

- > Creates a common understanding
 - > Includes different partners
 - > Open up for constructive communication
 - > Especially when comes to «Forest management»